

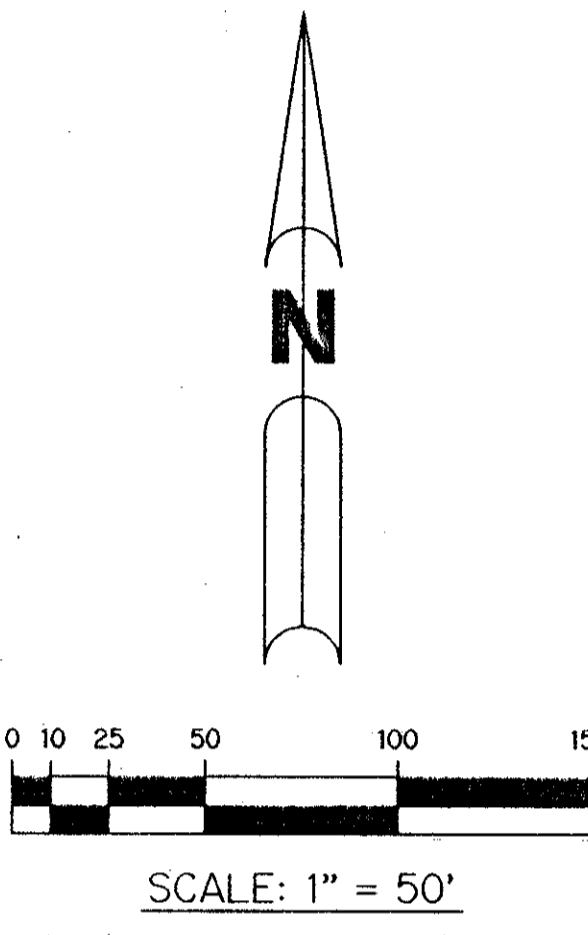
PINE TRACE AT BINK'S FOREST

A PART OF THE LANDINGS AT WELLINGTON, P.U.D.
BEING A PORTION OF SECTION 31, TOWNSHIP 43 SOUTH,
RANGE 41 EAST, VILLAGE OF WELLINGTON, PALM BEACH COUNTY, FLORIDA
SHEET 2 OF 2
JUNE 1996

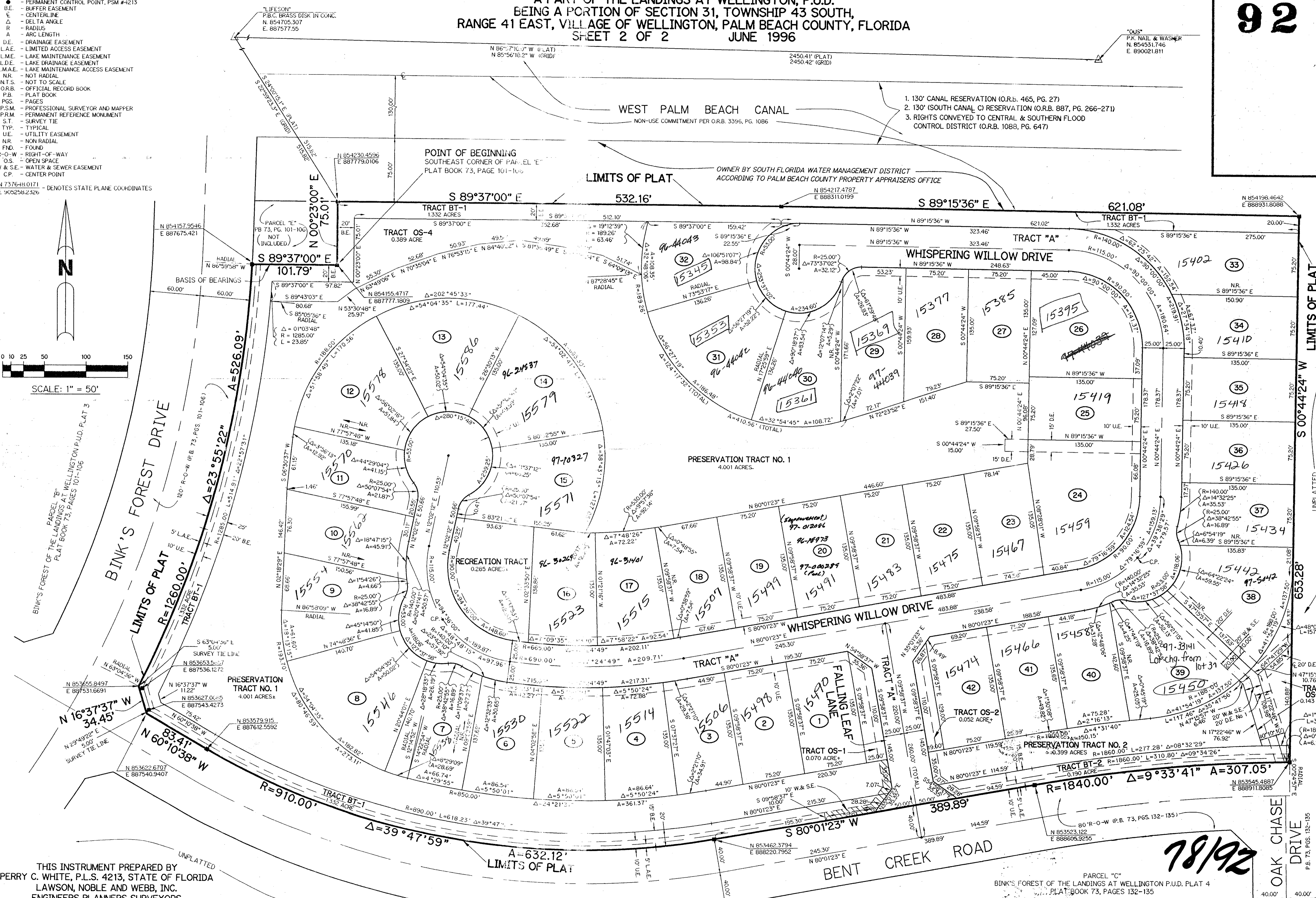
92

LEGEND:

- - PERMANENT REFERENCE MONUMENT, PSM #4213
 - - PERMANENT CONTROL POINT, PSM #4213
 - B.E. - BUFFER EASEMENT
 - CL - CENTERLINE
 - Δ - DELTA ANGLE
 - R - RADIUS
 - A - ARC LENGTH
 - D.E. - DRAINAGE EASEMENT
 - L.A.E. - LIMITED ACCESS EASEMENT
 - L.M.E. - LAKE MAINTENANCE EASEMENT
 - L.D.E. - LAKE DRAINAGE EASEMENT
 - L.M.A.E. - LAKE MAINTENANCE ACCESS EASEMENT
 - NR - NOT RADIAL
 - NT.S. - NOT TO SCALE
 - O.R.B. - OFFICIAL RECORD BOOK
 - P.B. - PLAT BOOK
 - P.G.S. - PAGES
 - P.S.M. - PROFESSIONAL SURVEYOR AND MAPPER
 - P.R.M. - PERMANENT REFERENCE MONUMENT
 - S.T. - SURVEY TIE
 - TYP. - TYPICAL
 - U.E. - UTILITY EASEMENT
 - NR. - NON RADIAL
 - FND. - FOUND
 - R-O-W - RIGHT-OF-WAY
 - O.S. - OPEN SPACE
 - W & S.E. - WATER & SEWER EASEMENT
 - C.P. - CENTER POINT
- N 737644.0171
E 9052582.2526 - DENOTES STATE PLANE COORDINATES



SUBDIVISION # 92
BOOK 79
PAGE 92
FLOOD MAP
QUAD # 1
ZONING REVISION
DATE 7-8-94
PUD NAME



THIS INSTRUMENT PREPARED BY
PERRY C. WHITE, P.L.S. 4213, STATE OF FLORIDA
LAWSON, NOBLE AND WEBB, INC.
ENGINEERS PLANNERS SURVEYORS
WEST PALM BEACH, FLORIDA

PARCEL "C"
BINK'S FOREST OF THE LANDINGS AT WELLINGTON P.U.D. PLAT 4
PLAT BOOK 73, PAGES 132-135

0269-016

78/92